

Does Security Matter?

Security and integrity of the game data and the generation process are the most critical elements for instant win games.

Any publicized case of defrauding the games could have a disastrous effect on the whole industry as current audit capabilities are limited.

Over the years the gaming industry has seen many instances of manipulation of outcomes of games of chance.

Instant win games are exposed to many security threats. High availability of computer technology combined with no ability to audit the results make it an easy target for fraud.

Instant win games are especially vulnerable to computer fraud as winners are determined instantly rather than by a later held draw.

Especially dangerous are the insider attacks, because they are the hardest to detect.



Security Threats

to instant win games include:

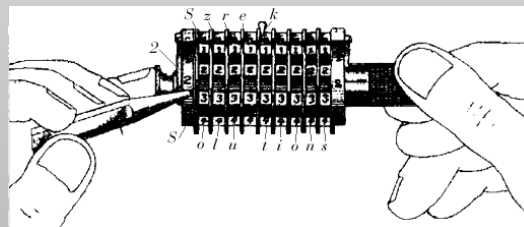
- Outcome generation **program may be exchanged or overwritten**, locally or remotely.
- Program may have hidden features** that allow attackers to generate specific numbers.
- May be programmed with a bias** causing some combinations to happen more often, undetected by statistical analysis.
- May be predictable** to allow attackers to predetermine the outcomes.
- Algorithms may rely on secrecy** of data or other elements that can not be verified; they may become exposed and the generation process will be compromised.
- Man-in-the-middle attack:** attackers can get between a client and a server to gain control over the generation of outcomes.

Szrek2Solutions

is an international company dedicated to providing innovative secure solutions for the gaming industry. Our products, Trusted Play™ and Trusted Draw™, offer the best random number security needed in today's insecure world.

We provide end-to-end product implementation. Our services include customization, integration, product support and consulting. We have 50 years of experience in lottery industry in system design and implementation. Our areas of expertise include:

- Game design
- System and data security
- System architecture and design
- Products integration
- Technical evaluation
- Communication consulting
- Requirements gathering



Szrek2Solutions

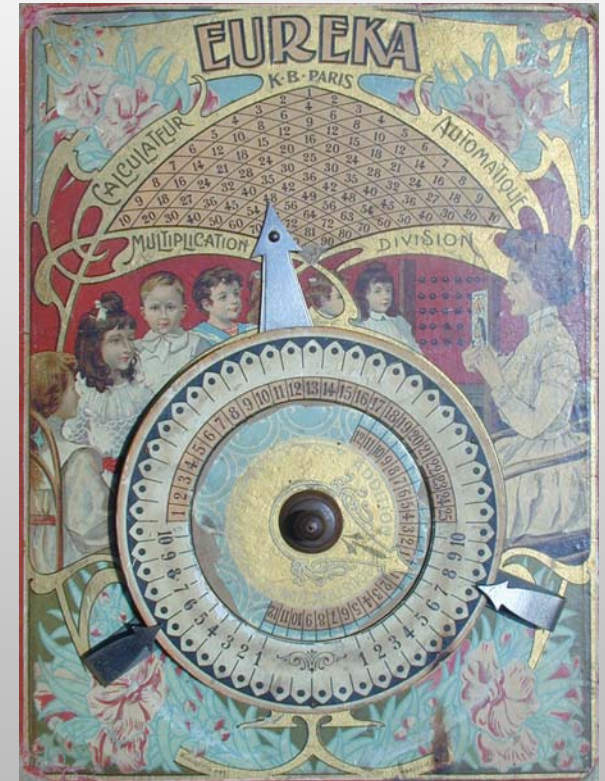
60 Spencer Avenue
East Greenwich, RI 02818, USA
Phone/Fax: +1 (401) 398-0395
Email: info@szrek.com
Website: www.szrek.com

Copyright © 2004 Szrek2Solutions

Szrek2Solutions

Trusted Play™ Secure Betting

**For Instant Win Games:
Internet, mobile, VLT, casino, on-line**



When I play I trust

www.szrek.com



Trusted Play™ Secure Betting

Trusted Play™ is an innovative computerized system to generate instant win game outcomes in a secure way, protecting against even the most skilled attackers. Trusted Play will detect any potential fraud against your system, including insider attacks.

Trusted Play Main Features

- ⇒ Randomly generated outcomes are unpredictable yet can be audited.
This is a unique feature of Trusted Play, not available in any other bet generation system on the market.
- ⇒ Audit verifies generation process and unequivocally verifies game outcomes; Certifies that there was no fraud during the generation process.
- ⇒ Uses modern cryptographic hardware and software to generate and verify random outcomes; Trusted Play detects insider attacks even years after the game.
- ⇒ Has unique audit capability based on a patented method of generating Unpredictable Auditable Random Numbers.
- ⇒ Has undergone extensive tests proving desired statistical properties.
- ⇒ Is flexible and easy to use.
- ⇒ Is priced competitively.
- ⇒ Single system handles outcome generation for many games.
- ⇒ Wide variety of games and multiple platforms are supported.

Trusted Play Components

- φ **Trusted Play Engine**
 - Tamper evident game outcomes generation
 - Time stamp
 - Audit data logging
 - Robust and reliable
- φ **Cryptographic Hardware Security Module (HSM)**
 - Digital signing
 - Tamper evident, FIPS 140-1 Level 2 Compliant
 - High-assurance security mechanisms
 - Enhanced firmware for gaming security
 - Incorruptible Real Time Clock

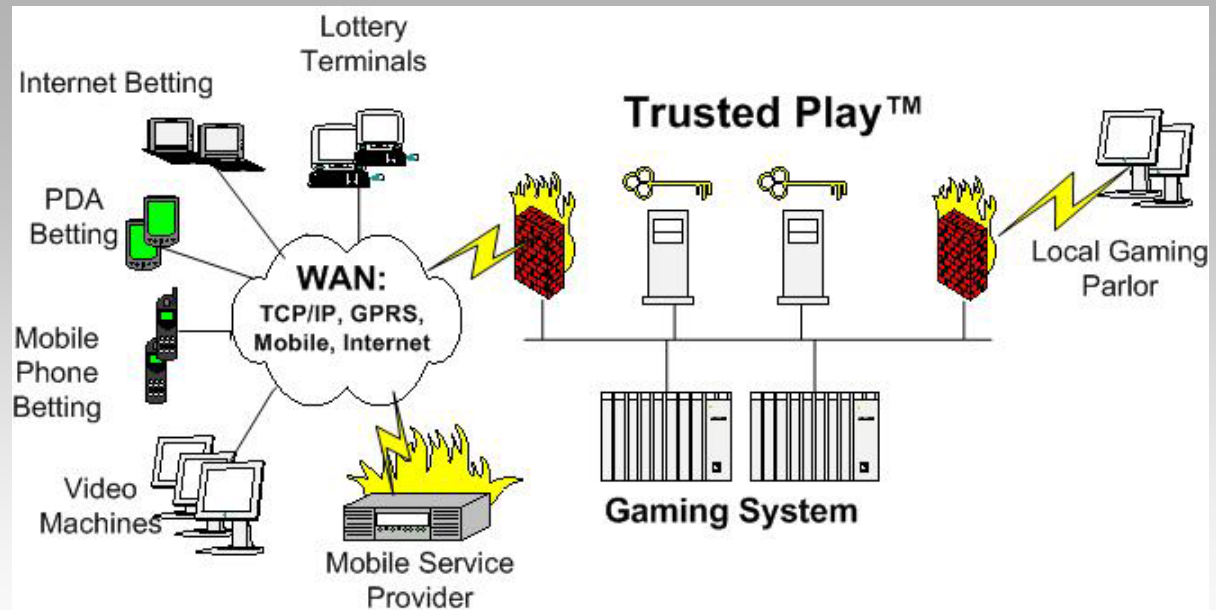


Trusted Play Logical Diagram



- φ **Gaming System Interface**
 - Client / Server standard SOAP interface
 - Works with many host platforms (IBM AIX, SUN SPARC, HP, Windows)
 - High performance
 - Supports Class II and Class III games, bingo, keno, numbers, lotto, cards, etc.
- φ **Trusted Play Verification System**
 - Stand alone or as part of existing audit systems
 - Verifies game outcomes and process
 - Provides audit report and statistical tests

System Architecture Diagram



Trusted Play can be used to secure instant win betting done over traditional channel via lottery terminals, or using Internet, PDA, and mobile phone betting. Also betting from remote or local video gaming devices can be secured by Trusted Play system.